



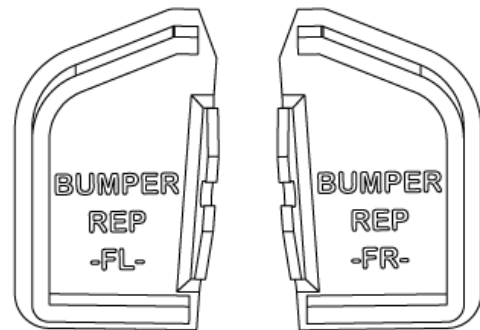
# PRODUCT INSTALLATION GUIDE



<b>PRODUCT:</b>	<i>OTA LC300 FLARE KIT - BUMPER BAR END CAPS</i>
<b>VEHICLE:</b>	<i>TOYOTA LANCRUISER - 300 SERIES</i>

## TOOLS/ITEMS REQUIRED FOR FITTING:

- MASKING TAPE
- TWO PART EPOXY PLASTIC GLUE (JB Weld - Plastic Weld)
- POPSTICK (GLUE APPLICATION)
- HACK-SAW
- WHITE OE BODY-CLIP (BUMPER REPLACEMENT)
- PEN/MARKER
- SAND PAPER (240 GRIT +)
- G-CLAMP
- \*TOOLS REQUIRED FOR FLARE INSTALL\*
- M10 BOLT, NUT AND FLAT WASHER



<b>SUPPLIED ITEMS</b>		
<b>DESCRIPTION</b>	<b>QTY</b>	<b>PART NUMBER</b>
FLARE END CAPS (LH & RH TO SUIT SPECIFIED BUMPER)	2	-
END CAP CUTTING JIGS (LH & RH)	2	-

## NOTE:

- IT IS RECOMMENDED TO FIT THE END CAPS BEFORE HAVING THE FLARES PAINTED, TO ENSURE A BETTER FINISH

- THESE INSTRUCTIONS ARE ONLY FOR THE INSTALLATION OF THE BUMPER END CAPS AND NOT THE FLARE KITS.

- THESE INSTRUCTIONS SHOW THE BUMPER REPLACEMENT END CAP, HOWEVER THE SAME INSTRUCTIONS CAN BE APPLIED TO ALL CAPS, BESIDES WHERE NOTED

# OVERLAND TOURERS AUSTRALIA

---

STEP 1:

USING SOME MASKING TAPE, NEATLY MASK THE FLARE ALONG AND AROUND WHERE IT WILL BE CUT.



STEP 2:

PROCEED BY ATTACHING THE FLARE FOLLOWING THE FLARE FITTING INSTRUCTIONS



STEP 3:

WITH THE FLARE IN PLACE, MARK ON THE TOP SIDE AND UNDERSIDE WHERE THE CUT LINE OR MARK MEETS THE FLARE. THEN USE THE SUPPLIED JIG AND A MARKER (USING THE CORRECT SIDE) TO CONTINUE THE CUT LINE ACROSS THE FLARE ON ALL FACES.

\*IF POSSIBLE, IT IS EASIER TO COMPLETE THIS STEP BEFORE THE BUMPER IS FITTED AS YOU CAN USE THE CUT-LINE OR MARK AS REFERENCE\*



STEP 4:

REMOVE THE FLARE FROM THE VEHICLE ONCE THE LINE IS CORRECTLY MARKED. ALIGN THE EDGE OF THE CUTTING JIG TO THE MARKED CUT LINE (WHERE THE ARROW POINTS) AND USING A G-CLAMP, FIX THE JIG FIRMLY IN PLACE SO IT CANNOT MOVE.

\*FOR BARS THAT DO NOT REPLACE THE BUMPER, THE JIG HAS A SLOTTED HOLE ADDED. ALIGN THE TAB AND SLOT, THEN BOLT IN PLACE USING A M10 BOLT, FLAT WASHER AND NUT\*

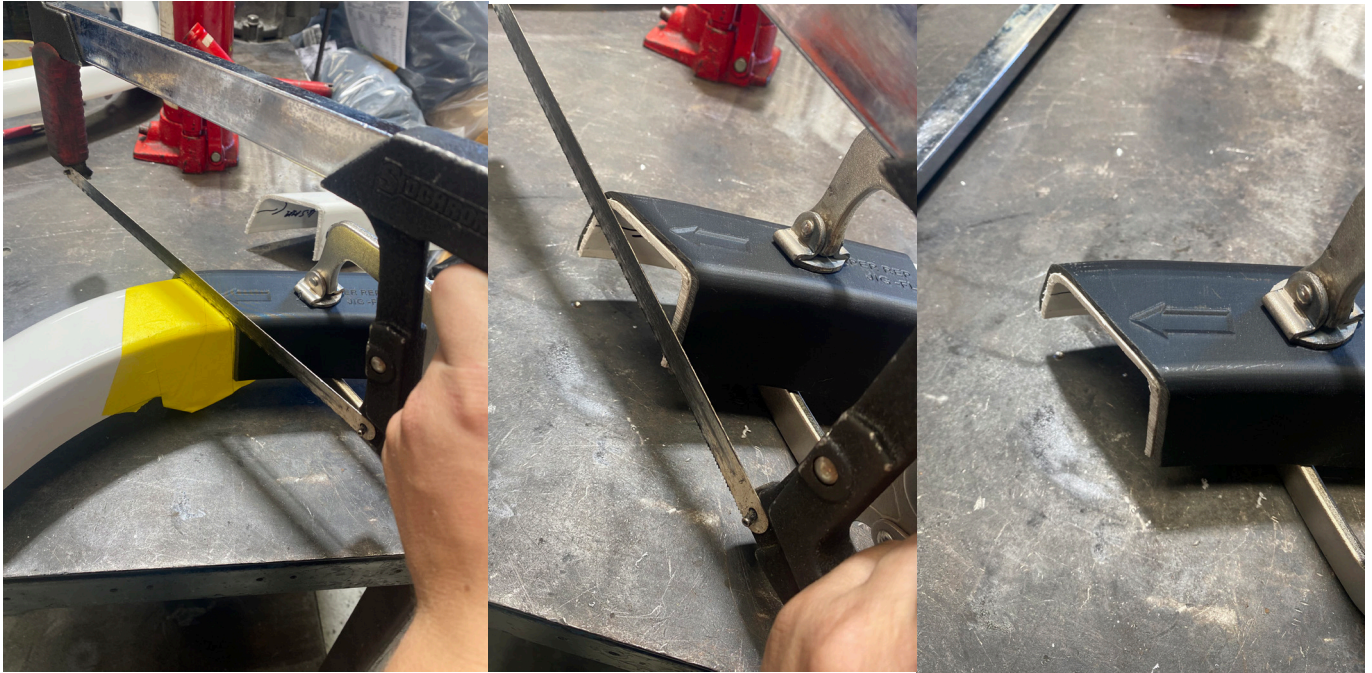




STEP 5:

FIRMLY HOLD THE FLARE IN PLACE AGAINST A BENCH. WHILE USING A HACK-SAW BEGIN TO LIGHTLY SAW INTO THE FLARE USING THE JIG AS GUIDE TO HELP START THE CUT AND ENSURE IT IS STRAIGHT AND NEAT (DO NOT CUT AGGRESSIVELY AGAINST OR INTO THE JIG)

\*IF YOU HAVE ACCESS TO A BENCH VISE, THIS CAN ALSO HELP TO SECURE THE FLARE IN PLACE WHEN CUTTING\*



STEP 6:

ONCE THE FLARE HAS BEEN CUT THROUGH, CLEAN UP THE CUT EDGE WITH SOME SANDPAPER SO THAT NO LOOSE OR CUT MATERIAL IS ATTACHED ANYMORE.

WE RECOMMENDED DUMMY FITTING YOUR FLARE ONCE CUT, TO ENSURE YOU ARE HAPPY WITH THE CUT LINE BEFORE CONTINUING.

**\*REPEAT THE ABOVE STEPS ON THE OPPOSITE FLARE\***

STEP 7:

WITH BOTH FLARES CUT, PREPARE THE TWO PART MIX GLUE AS PER THE PACKET INSTRUCTIONS - WE USED **JB WELD PLASTICWELD** AND FOUND IT TO BOND WELL AND FAST

STEP 8:

WITH THE GLUE READY AND PREPARED, APPLY THE GLUE TO THE INNER EDGE AND LIP - DO NOT APPLY TOO MUCH TO HELP ELIMINATE MESS WHEN FITTING



STEP 9:

NOW THAT BOTH SURFACES ARE PREPPED AND THE GLUE IS APPLIED, INSERT THE RH END CAP TO THE RIGHT HAND FLARE AND THE LH END CAP TO THE LEFT HAND FLARE - THE CAPS WILL ALIGN TO THE EDGE OF THE FLARES WHERE CUT, HOWEVER THEY MAY REQUIRE SOME SLIGHT ADJUSTMENT TO SIT CORRECTLY.

USING SOME MASKING TAPE, TAPE AROUND THE END CAP TO SECURE IT AND ALLOW FOR THE GLUE TO SET





STEP 10:

ONCE THE GLUE HAS SET, REMOVE THE TAPE FROM THE CAP. THE FLARE IS NOW READY FOR COLOUR MATCHING AND THEN BEING FITTED (**IF NOT BUMPER REPLACEMENT**).

NOTE: THE BEST RESULT WE GOT FOR OUR FLARES WAS FROM SANDING AND BOGGING THE FLARE AND END CAP TO MAKE A SEEMLESS FINISH WHEN PAINTED



**IF YOU ARE FITTING A BUMPER REPLACEMENT END CAP, PLEASE CONTINUE READING THE INSTRUCTIONS TO COMPLETE FITMENT**

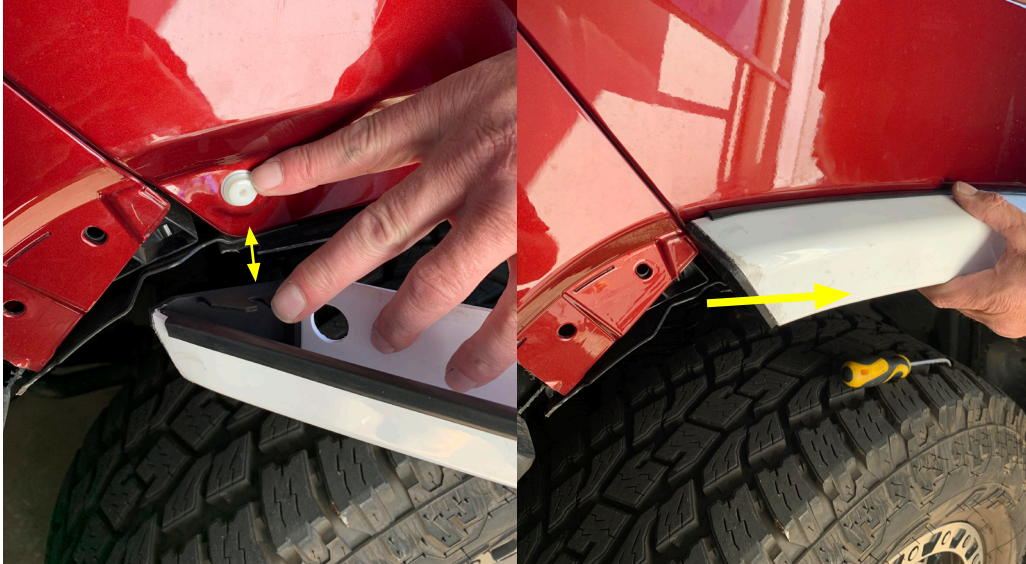
STEP 11:

TO FIT THE BUMPER REPLACEMENT END CAP YOU WILL NEED TO REFIT ONE OF THE WHITE OE BODY CLIPS BACK INTO THE VEHICLE - THIS IS LOCATED JUST BEHIND THE BUMPER LINE AS SHOWN IN THE PHOTO BELOW.



STEP 12:

TO FIT THE FLARE BACK ON, YOU WILL NEED TO ALIGN THE WHITE BODY CLIP WITH THE SLOTTED FACE ON THE END CAP. WITH THE REST OF THE FLARE ROUGHLY IN PLACE, SHIFT THE FLARE BACK AND IN PLACE UNTIL YOU FEEL THE CLIP CLICK IN PLACE ON THE END CAP.



WITH THE FLARE PAINTED AND IN PLACE, YOUR FLARE IS NOW READY TO BE FITTED OFF AS PER THE FLARE KIT INSTRUCTIONS.

