



PRODUCT INSTALLATION GUIDE



PRODUCT:	FENDER FLARE KIT
VEHICLE:	TO SUIT TOYOTA LANDCRUISER - 300 SERIES
MODELS APPLICABLE:	GX,GX,VX,SAHARA & GR SPORT
PRODUCT NO.	OTA-78-2022-002-000



DESCRIPTION	QTY	PART NUMBER
LC300 FENDER FLARE KIT	1	OTA-FLK-300-1 (VX,GX,GXL,SAHARA) OR OTA-FLK-300-3 (GR-SPORT)

FITTING KIT - SUPPLIED			
ITEM NO.	DESCRIPTION	QTY	PART NUMBER
1	TORX BIT SCREW	4	TORX516
2	U-CHANNEL RUBBER (CUT TO LENGTH)	6	RE569

FOR PRODUCT WARRANTY PLEASE REFER TO OUR WEBSITE - www.micktighe4x4.com.au/

TABLE OF CONTENTS

PAGE(S)	DESCRIPTION
3	TOOLS REQUIRED
4-5	OE FLARE REMOVAL
5-8	OTA FRONT FLARE INSTALLATION
9	OE FRONT MUDFLAP REMOVAL
10-13	OTA FRONT MUDFLAP (STANDARD TYRE +1) INSTALLATION
13-18	OTA REAR FLARE (DOOR) INSTALLATION
19	OE REAR MUDFLAP REMOVAL
20-21	OTA REAR MUDFLAP INSTALLATION
22-25	OTA FRONT MUDFLAP (35" TYRE) INSTALLATION
26-27	OTA REAR MUDFLAP EXTENSION

TOOLS REQUIRED

- 4mm ALLEN KEY

- T20 TORX BIT WRENCH

- BODY TRIM TOOL (OPTIONAL)

- SMALL AND LARGE FLAT HEAD SCREW DRIVER (FOR REMOVING CLIPS)

- 3mm DRILL BIT

- CHUCK DRILL



OE FRONT FLARE REMOVAL

STEP 1: Using the large flat head screw driver, or body trim tool, work your way around the underside of the OE flare and remove all 5 body clips. Ensure care is taken to not damage or break the OE clips
*Note: Do not discard any OE fitting hardware or clips, as these will be re-used to install OTA Flares and Mudflaps

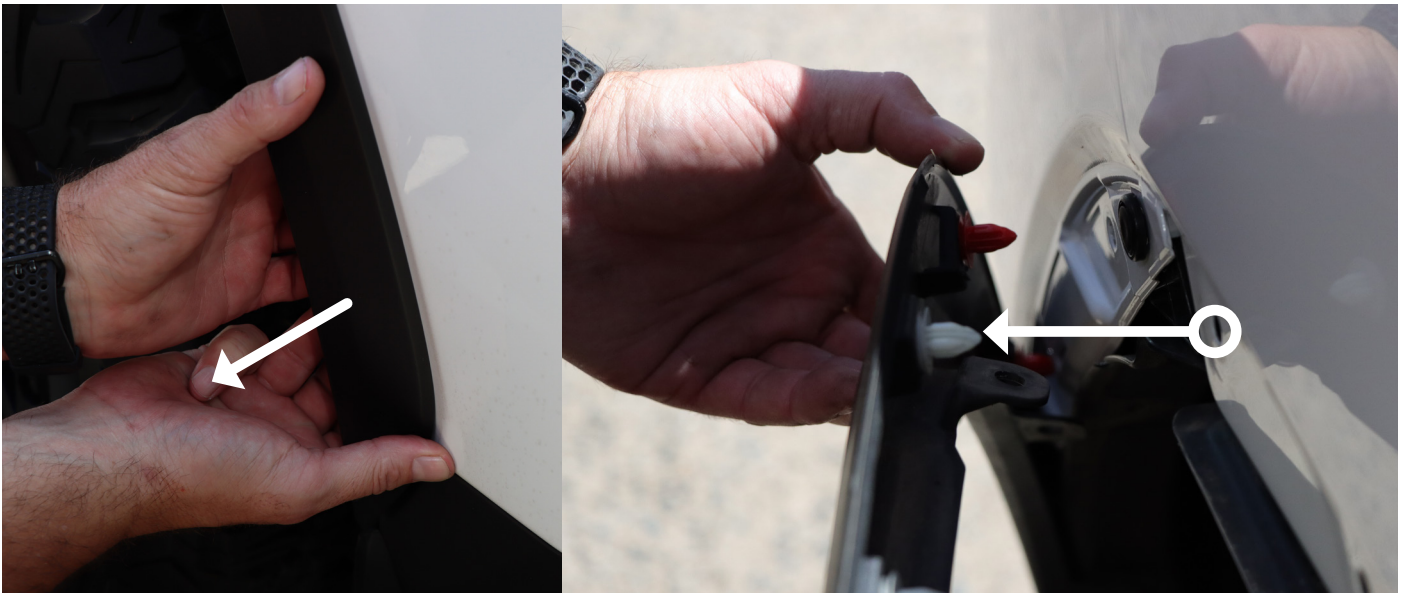


STEP 2: Using the 4mm Allen Key remove the 2 remaining screws from the corners of the flare. Ensure all clips and screws are kept in a small container so they are not lost.



STEP 4: Starting from the rear of the front flare, carefully grip and pull the flare off the body of the car. Work your way along until you have removed 11 clips.

Note - It is important to start from the rear to minimise damage to OE flare.



STEP 5: Once you have removed all 11x clips, you will need to remove 2 more clips from the front bumper. Using a long flat head screw driver or similar, press and remove each clip from inside the wheel arch. This will remove the front flare from the car.



FOR REFERENCE - OE FRONT FLARE REMOVED



OTA FRONT FLARE INSTALLATION

STEP 1: Prepare surface for installation by cleaning with a cloth and some soapy water or cleaning product.



FOR PRODUCT WARRANTY PLEASE REFER TO OUR WEBSITE - www.micktighe4x4.com.au/

STEP 2: Apply supplied rubber trim for OTA rear flares onto the top edge of each flare, which is supplied to cut length.

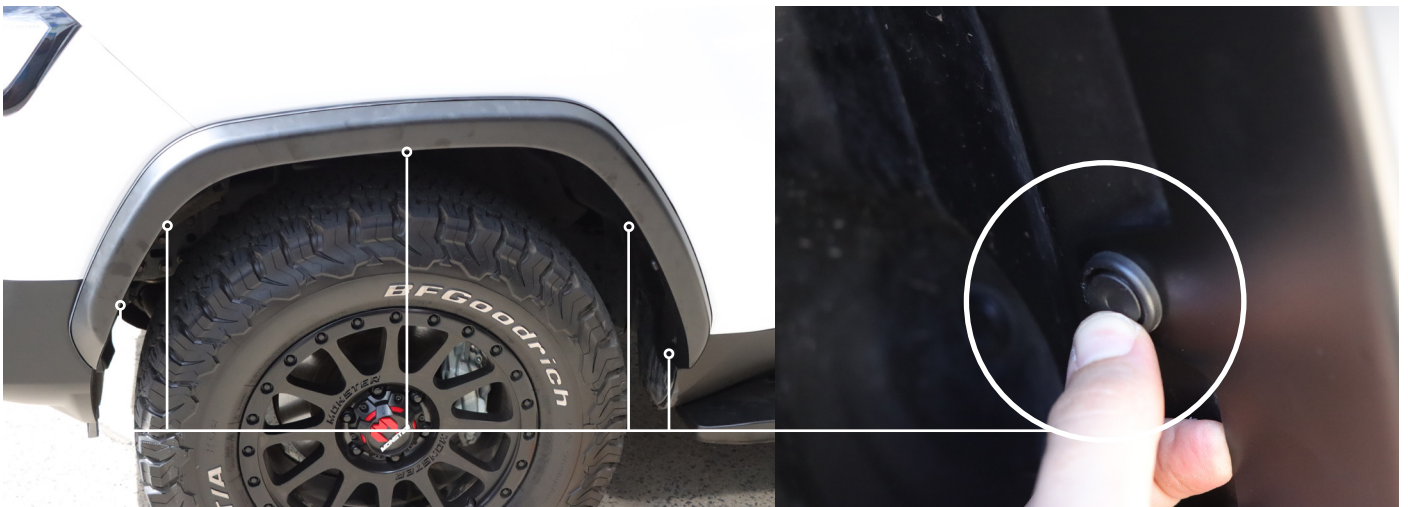
*Note the supplied rubber has a 45° cut at either end.



STEP 3: Carefully align flares to mounting points of the OE flare



STEP 4: Once aligned, fit the flare with the 5 body clips from the oe flare using the original holes.



STEP 5: After refitting the clips, put the two supplied spacers between the flare and hole, screw in the two remaining screws to complete the fitment of your front flare.



OE FRONT MUDFLAP REMOVAL

STEP 1: Using a 4mm allen key - begin removal of the mudflap by unscrewing 3 screws on the front face of the mudflap.

*Note: Do not discard any OE fitting hardware or clips, as these will be re-used to install OTA Flares and Mudflaps

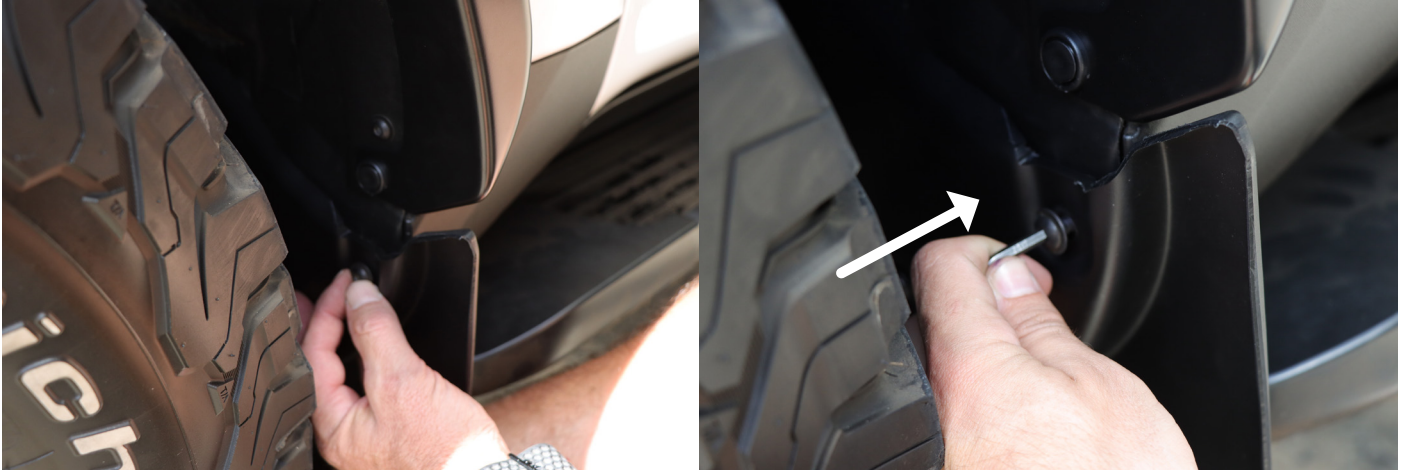


STEP 2: Using the large flat head screwdriver, remove the clip that is on the underside, to remove the mudflap



OTA FRONT MUDFLAP INSTALLATION (TO SUIT STANDARD AND +1 WHEEL SIZE)

STEP 1: Guide and lightly screw in all 3 screws with your hands to locate mudflap.



STEP 2: Once the screws are lightly fixed, align and push clip into the bottom hole. Once the clip is in, tighten all 3 screws to secure the front mudflap in place.



OE REAR FLARE REMOVAL

STEP 1: Using the small flat head screw driver, or body trim tool, work your way around the underside of the OE flares and remove all 4 small body clips (3 located on the door flare and 1 on the rear). Ensure care is taken to not damage or break the OE clips

*Note: Do not discard any OE fitting hardware or clips, as these will be re-used to install OTA Flares and Mudflaps



STEP 2: Using the 4mm Allen Key remove the 2 remaining screws from the flares (1 located in the door flare and 1 in the rear).

- Ensure all clips and screws are kept in a small container so they are not lost.



STEP 3: Using the large flat head screw driver, remove the body clip from the rear flare.

- Check that all screws and body clips are removed before continuing.



STEP 4: Beginning with the door flares, carefully grip and pull the flare off the body of the car. Work your way along until you have removed 5 clips, which will release the flare.



STEP 5: Now from the top of the rear flare, carefully grip and pull the flare off the body of the car. Work your way along until you have removed 7 clips, which will release the flare.



OTA REAR FLARES INSTALLATION

STEP 1: Prepare surface for installation by cleaning with a cloth and some soapy water or cleaning product.



STEP 2: Apply supplied rubber trim for OTA rear flares onto the top edge of each flare, which is supplied to cut length.

*Note the supplied rubber has a 45° cut, which is to be fitted to at the front end of this flare.



STEP 3: (Door flare only) Remove one of the body clips from the OE door flare and insert into the mount located on the inside of the OTA door flare.



STEP 4: (Door flare only) Carefully align the flare to the OE mounting point at the bottom of the flare and fit 1 small OE clip.

- Once the clip is secure, guide the red body clip into it's hole to secure the top of the flare.



STEP 5: Using the remaining 2 small OE clips, align holes and insert into the mounting hole in the corner and the top of the flare.

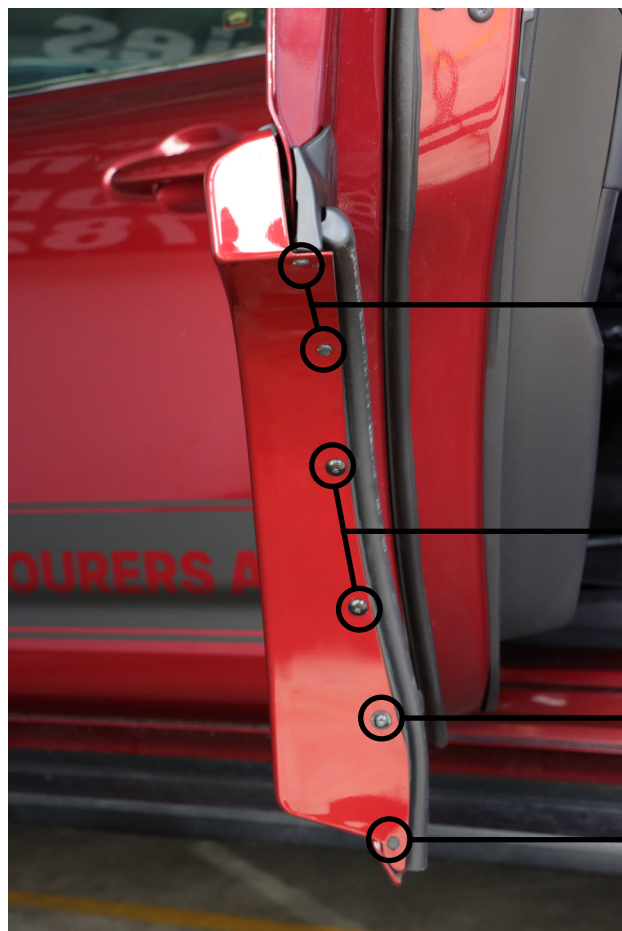


STEP 6: Using the OE screw, finger tighten into the mounting hole and fully secure with a 4mm Allen key.



STEP 7: Firmly press the flare against the car and using a 3mm drill bit, pilot drill in the centre of the remaining 2 slots. Once drilled, screw in one of the supplied torx bit screws with the T20 wrench.

- Repeat step for the second hole



FITTED DOOR FLARE FOR REFERENCE

2X OE SMALL CLIPS

2X SUPPLIED T20 TORX BIT SCREW

1X OE SCREW

1X OE SMALL CLIP

STEP 8: Once the door flare is fitted, carefully align the rear flare in place and fit both the small and large OE clips into the original mounting holes.



STEP 9: Secure the rear flare using the remaining the OE screw. Finger tighten, then fully secure using the 4mm Allen key.



OE REAR MUDFLAP REMOVAL

STEP 1: Start by removing the clip on the front face using a large flat head screw driver

*Note: Do not discard any OE fitting hardware or clips, as these will be re-used to install OTA Flares and Mudflaps



STEP 2: Using the 4mm Allen key, remove the 3 screws from the mudflap. (1 on the front face and 2 at the rear, under the car)



OTA REAR MUDFLAP INSTALLATION

STEP 1: Using one of the OE screws, align the mudflap to mount points and finger tighten. Tighten and lightly secure with a 4mm Allen Key.

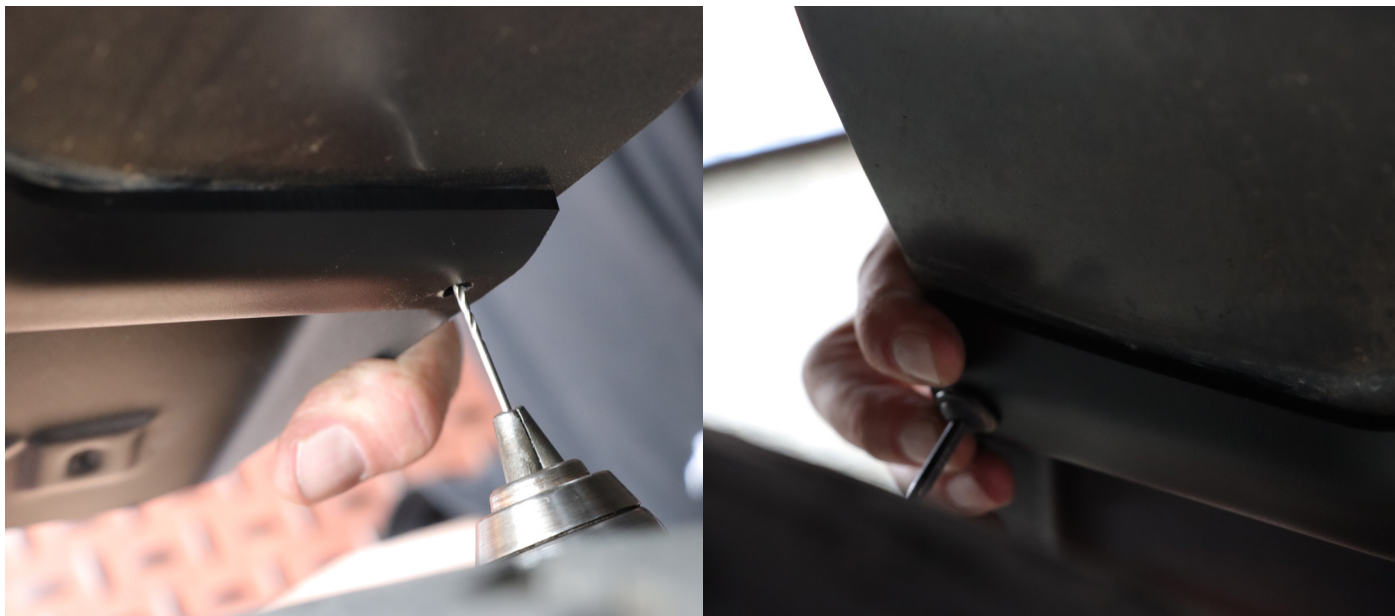


STEP 2: Push and insert the clip into the hole



STEP 3: Using a 3mm drill bit, firmly align the mudflap against the car and drill through the centre of the existing hole in the OTA mudflap. (Ensure the mudflap is pushed against the side of the car to allow for a correct fit)

Once the hole has been drilled, finger tighten one of the OE screws into the hole and secure using a 4mm Allen key.



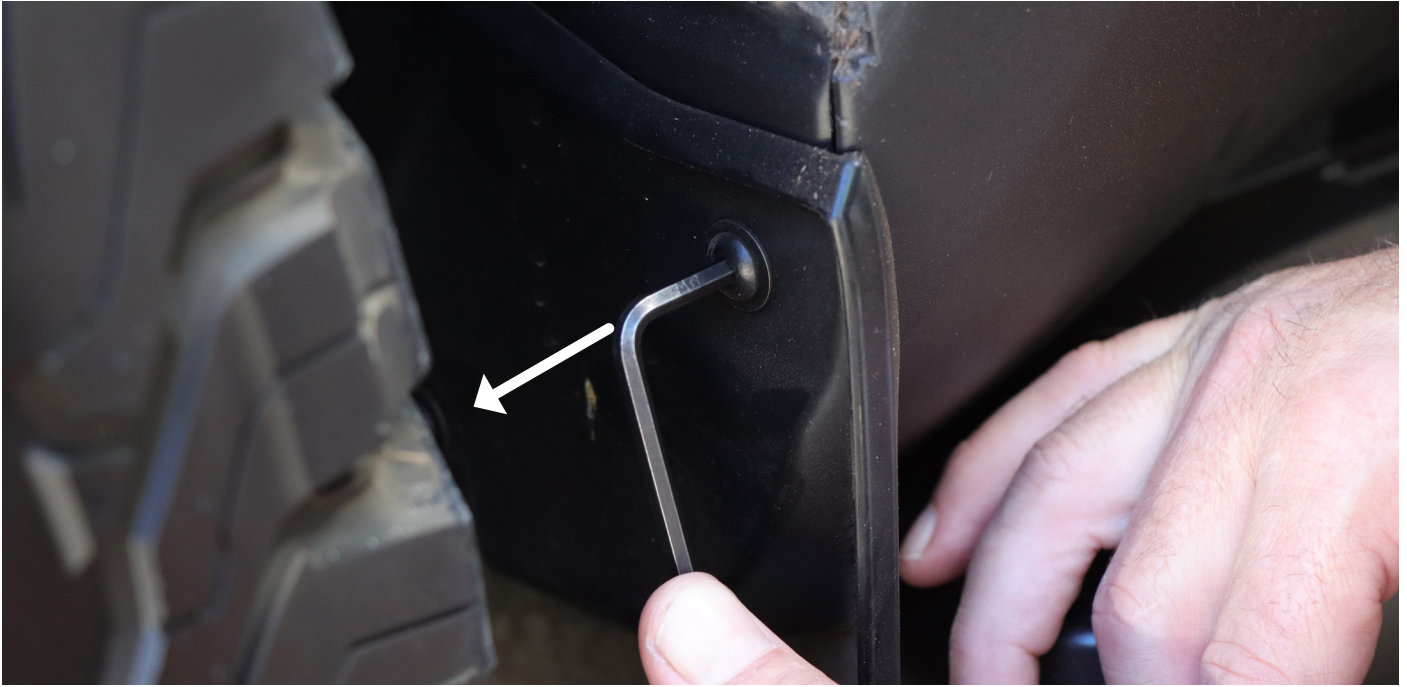
FITMENT COMPLETE: Once all of these steps have been completed on both sides of the car, your new OTA 300 series flares are now fitted!



OTA FRONT MUDFLAP INSTALLATION (TO SUIT 35" TYRE SIZE)

STEP 1: Using a 4mm allen key - begin removal of the OE mudflap by unscrewing 3 screws on the front face of the mudflap.

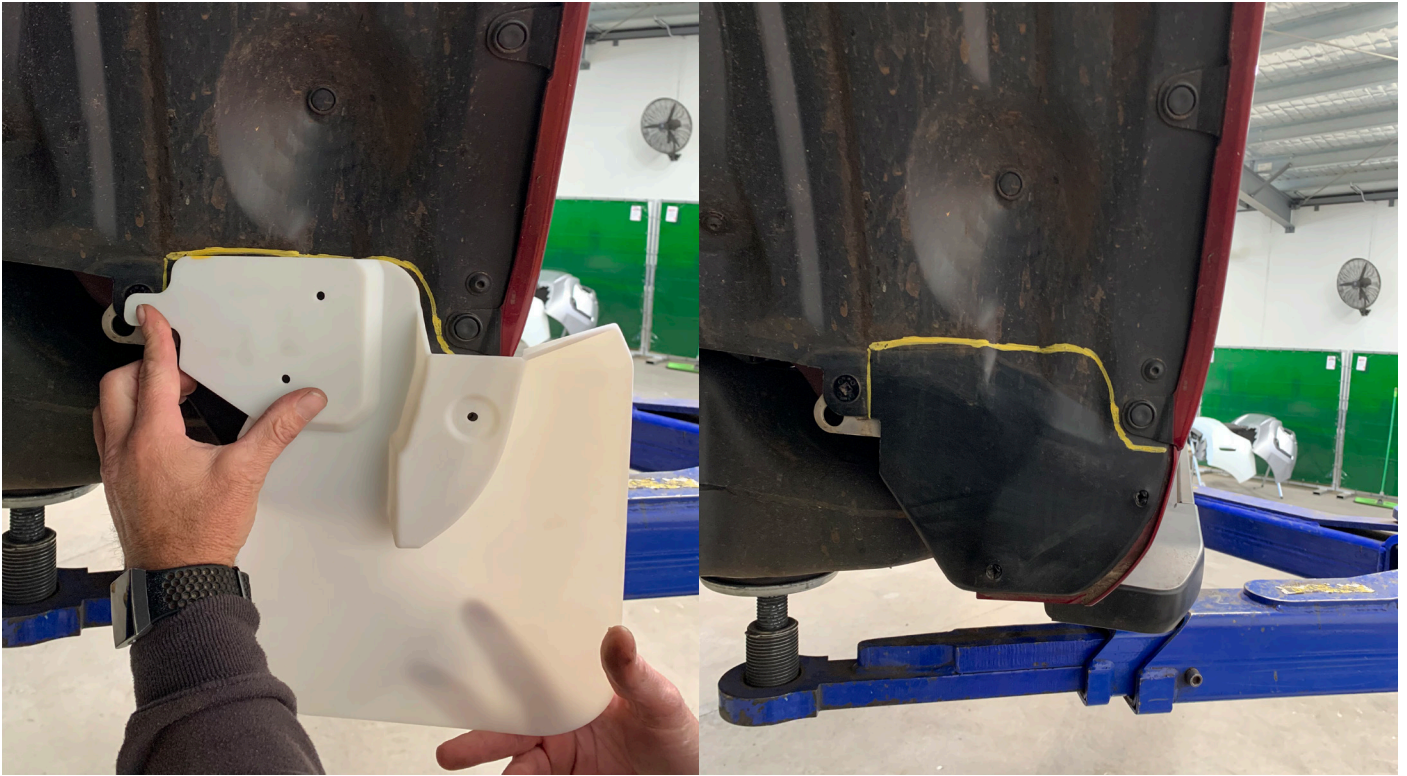
*Note: Do not discard any OE fitting hardware or clips, as these will be re-used to install OTA Flares and Mudflaps



STEP 2: Using the large flat head screwdriver, remove the clip that is on the underside, to remove the mudflap



STEP 3: Align OTA 35" Tyre Mudflap to mounting points on the inner guard - Once aligned correctly, trace around the top edge with a marker pen to create a clear and visible line to cut.



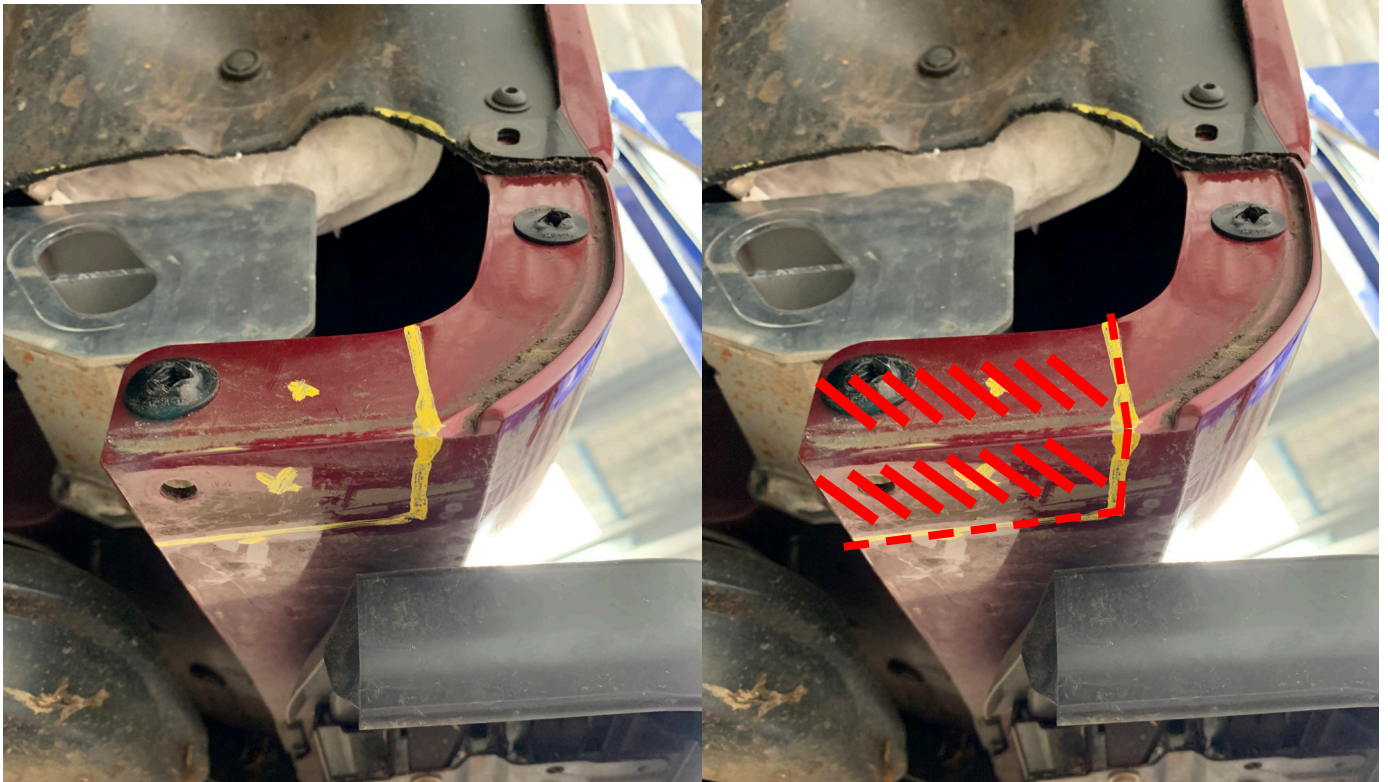
STEP 4: Using a Multi-tool with a cutting blade/edge, carefully trim along the line as marked, ensuring not the cut further than the thickness of the inner guard. Once completely cut, this will remove the cut piece of inner guard and expose the Aluminium crash tube, which will be used for mounting.



STEP 5: Measure in 65mm from the inner edge of the skirting and mark a line, square off to create a straight cut line. On the underside, Measure back 35mm from the front face, mark a line and square off again. Continue the line previously marked on the front face onto the underside until it meets the line marked at 35mm.
(See Pictures for Reference)



STEP 6: Using the Multi-Tool again, carefully cut along the marked lines to remove the piece of skirting.



STEP 7: Now realign your OTA 35" mudflap against the OE mounting points and against the crash tube. With the mounting points correctly aligned, mark the two mounting holes to the face of the crash tube.



STEP 8: Using a 4mm Drill Bit, Pre-drill the the marked holes on the crash tube. Once pre-drilled, realign the mudflap and insert the two supplied self tapping screws. The OTA 35" Mudflap, should now be installed.



OTA REAR MUDFLAP EXTENSION INSTALLATION (TO SUIT JMACX LIFT KIT)

STEP 1: Using a Pencil, on the OTA Rear Mudflaps, measure up 65mm from the bottom edge on both ends, mark and square off the line.



STEP 2: Align the supplied rubber piece with the marked line and outer edge of the mudflap and mark the 3x Mounting holes. (Check mounting holes to ensure they are correctly marked)



STEP 3: Using a 4mm drill bit, pre-drill all the marked holes through the mudflap.



STEP 4: Insert the supplied bolts from the rear of the mudflap. Once inserted, place the rubber over the bolts and then fix with the supplied washers and nyloc nuts, to complete the installation.

